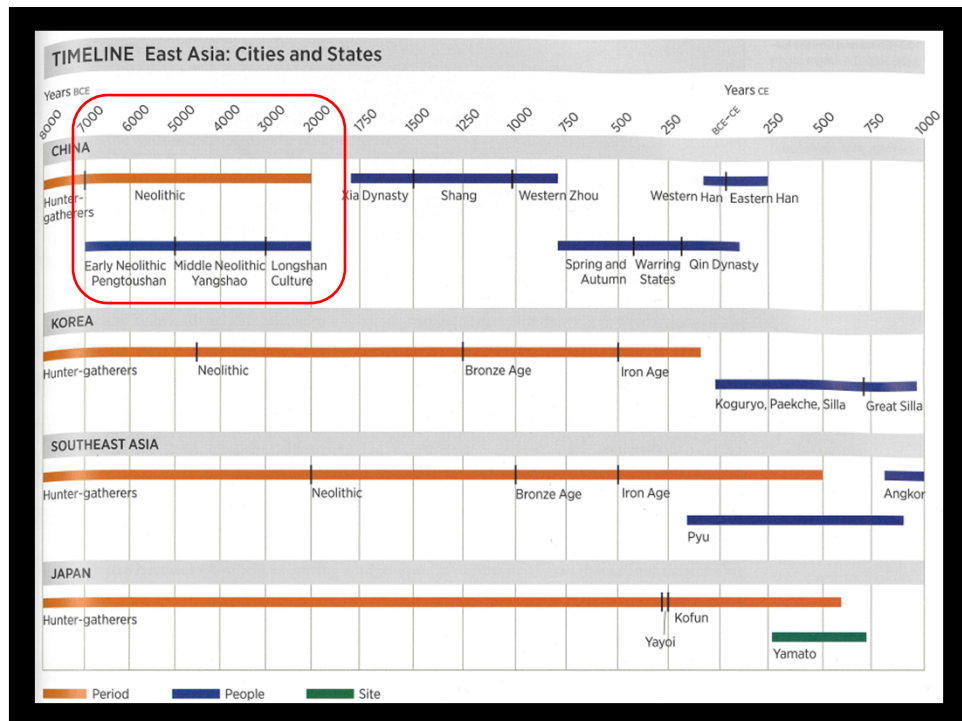
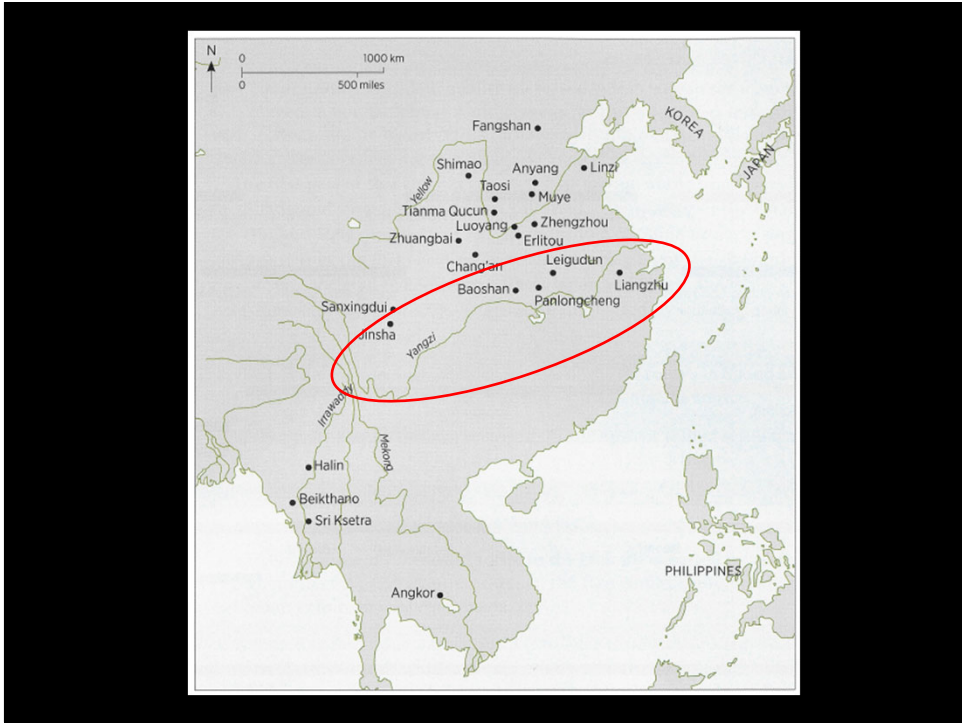


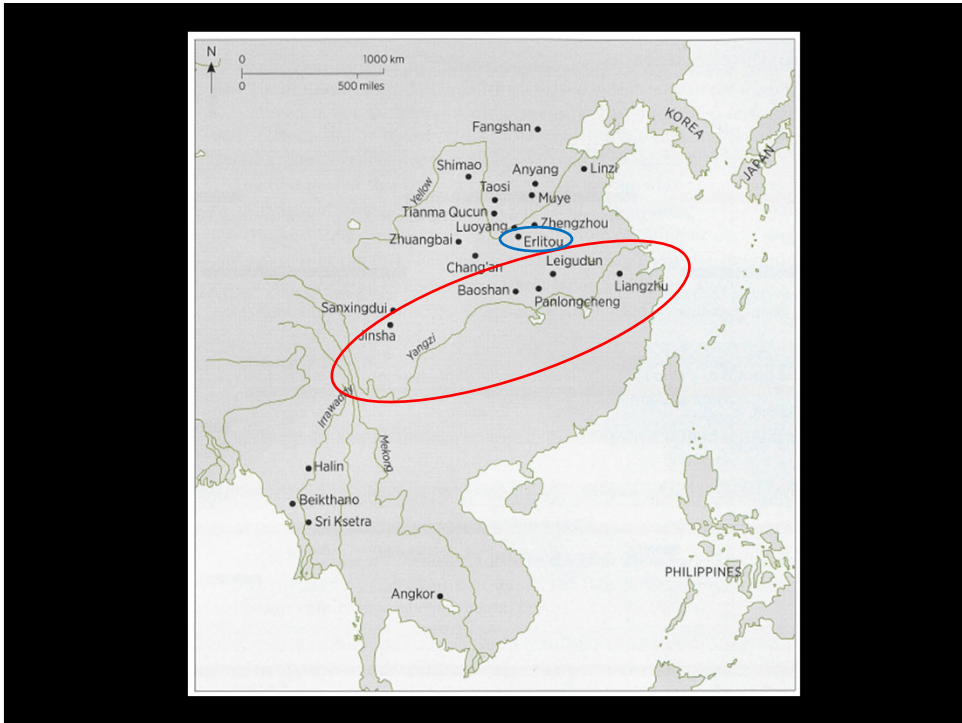
1



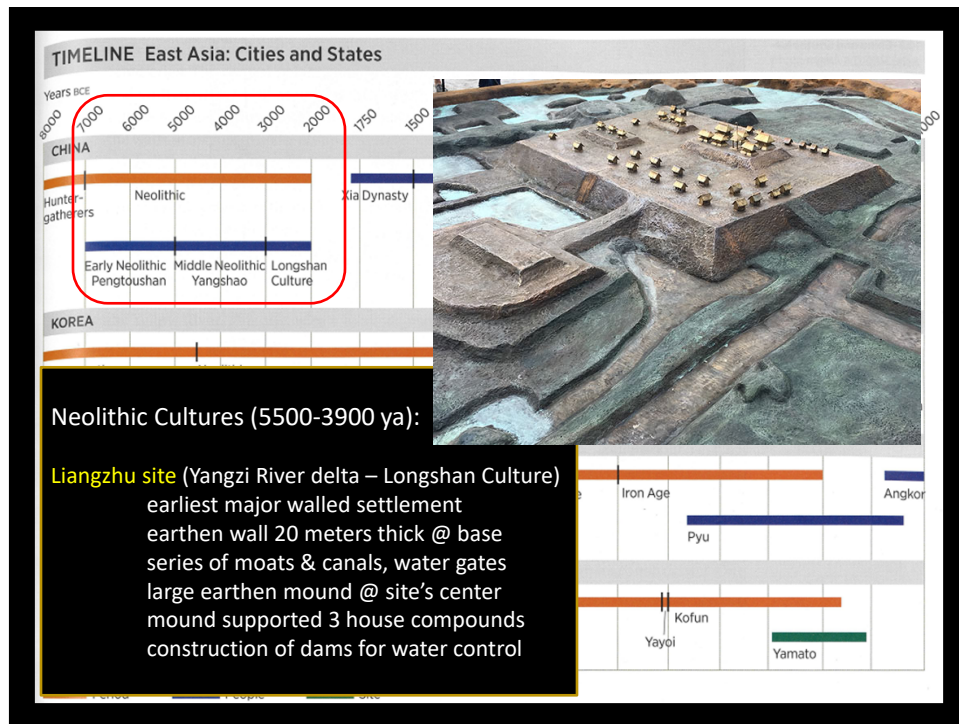
2



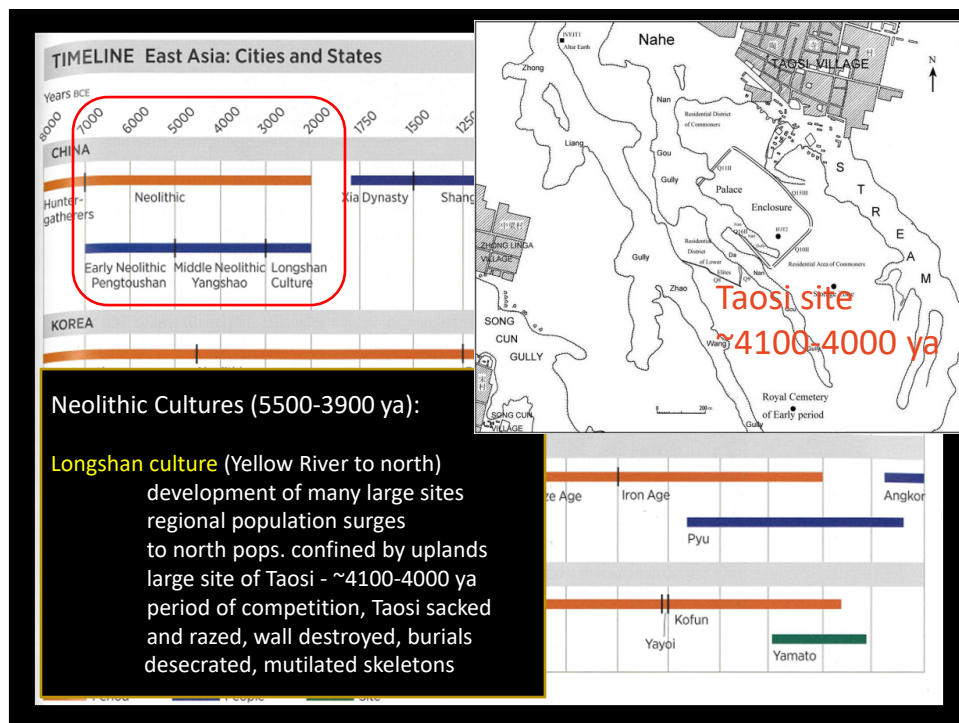
3



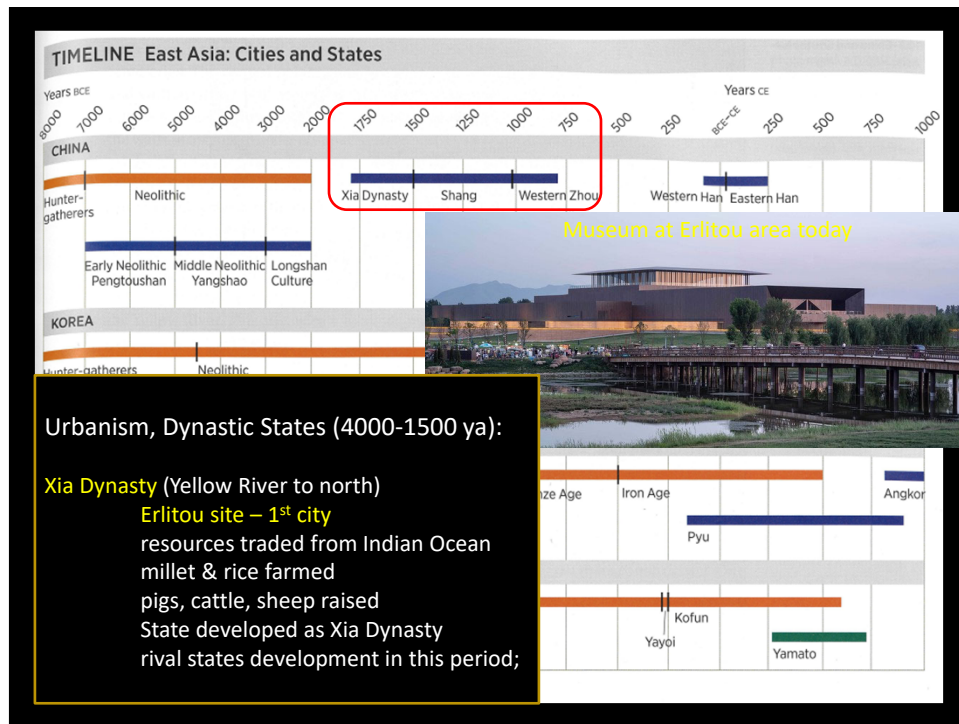
4



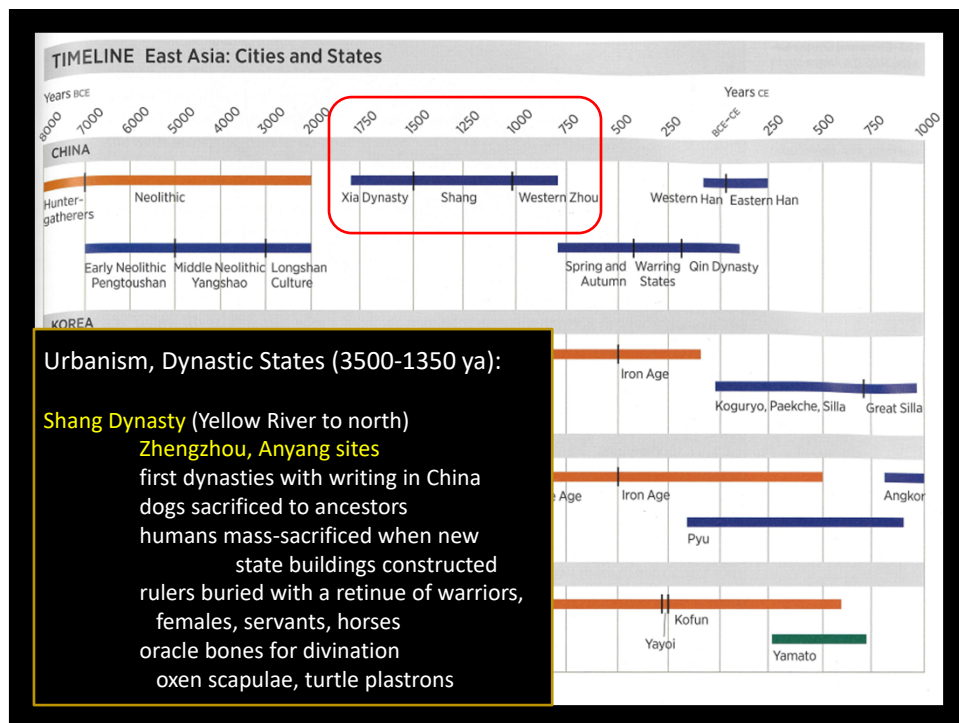
5



6



7



8

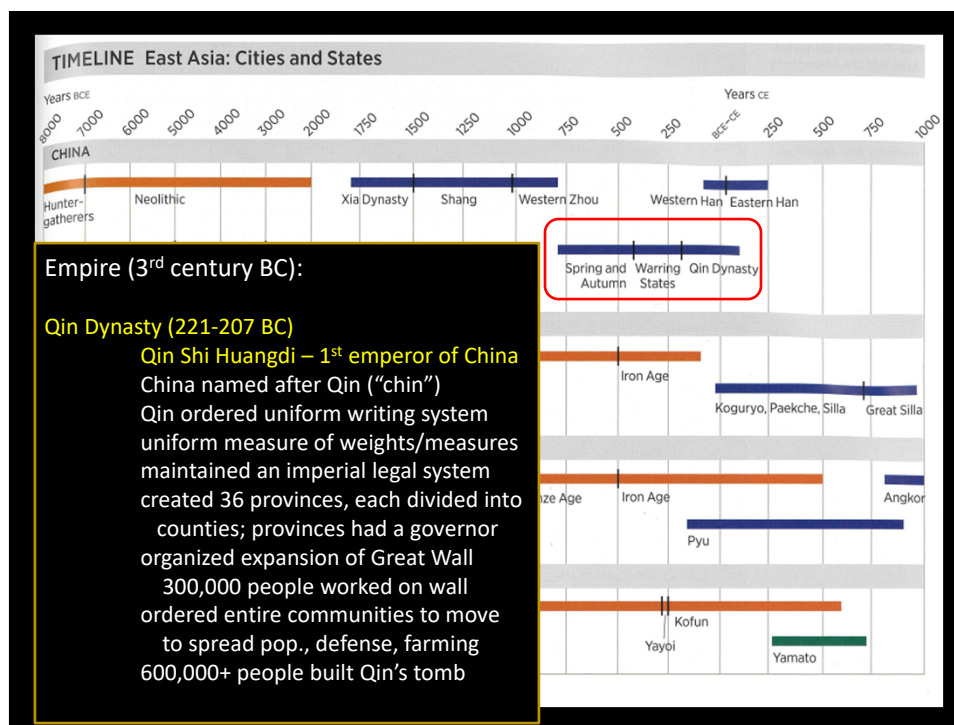


## Evolution of Chinese Writing by the Shang Dynasty (3500-1350 ya)

**Table 10.1  
The Evolution of Chinese Writing**

	Oracle bone inscriptions c. 1400-1200 BCE	Bronze inscriptions c. 1500-700 BCE	Small seal script standardized after 221 BCE	Chancery script c. 200 BCE-200 CE	Standard script c. 200 CE onward	Standard printed style c. 1400 CE onward	Cursive script c. 200 CE onward	Draft or "grass" script c. 200 BCE onward	Simplified script standardized 1956 CE	English translation
Pictograph										Horse
Differentiated pictograph										Up, to ascend
Pictographic compound										Sunset; negation
Phonetic compound										Willow

9



10

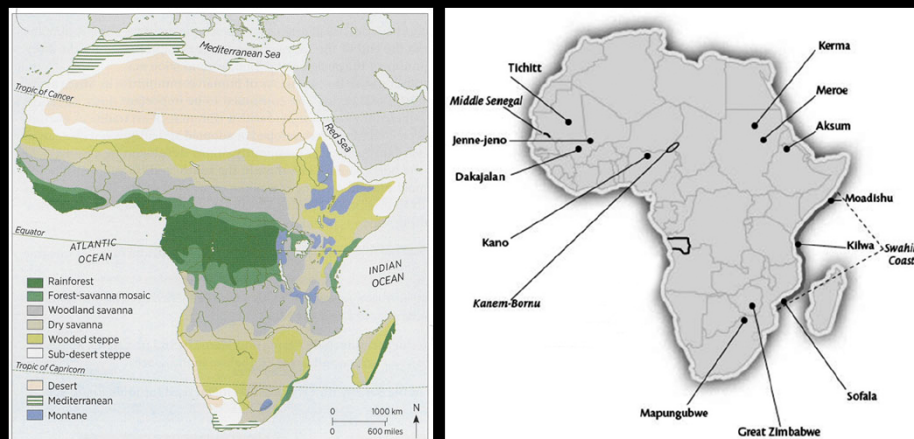
**10.16 The tomb of China's first emperor.** The tomb complex of Qin Shi Huangdi is one of the largest the world has seen. The emperor took with him to the afterlife all his possessions and followers. The former were buried in pits or placed inside his mausoleum. The latter, represented in bronze or terra-cotta, were interred in huge underground chambers.

8,000 terracotta soldiers have been exposed, slightly larger than life replicas of seemingly real individuals

**10.17 The emperor's royal chariot.** Excavations have still barely scratched the surface of this gigantic complex. This half-size bronze carriage, drawn by four horses, is one of the finest bronzes ever discovered in China.

11

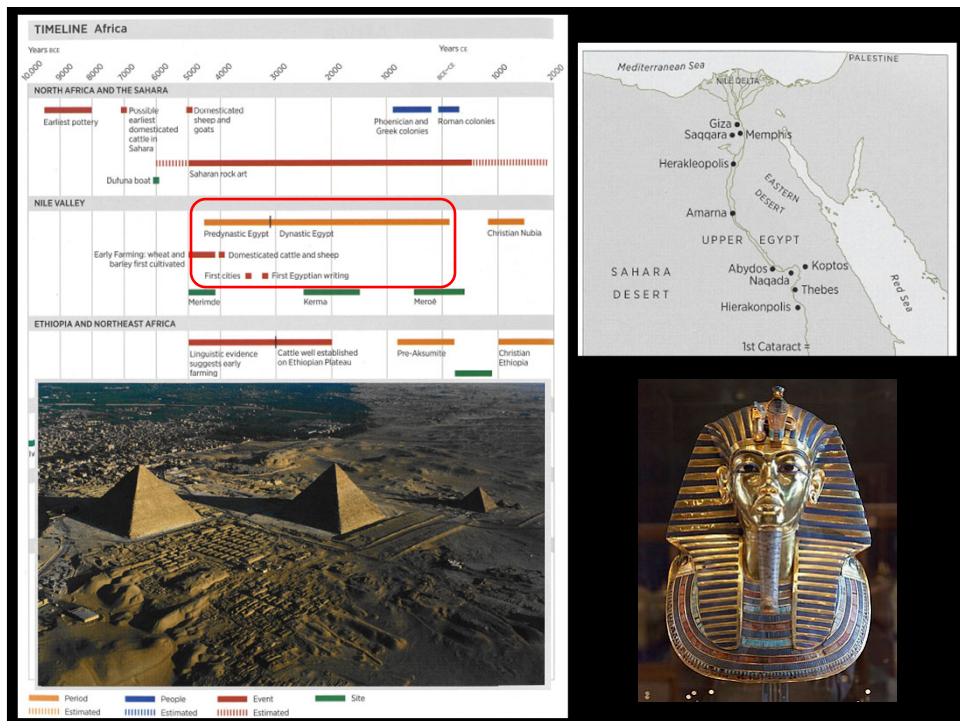
## Urban & State Society in Africa



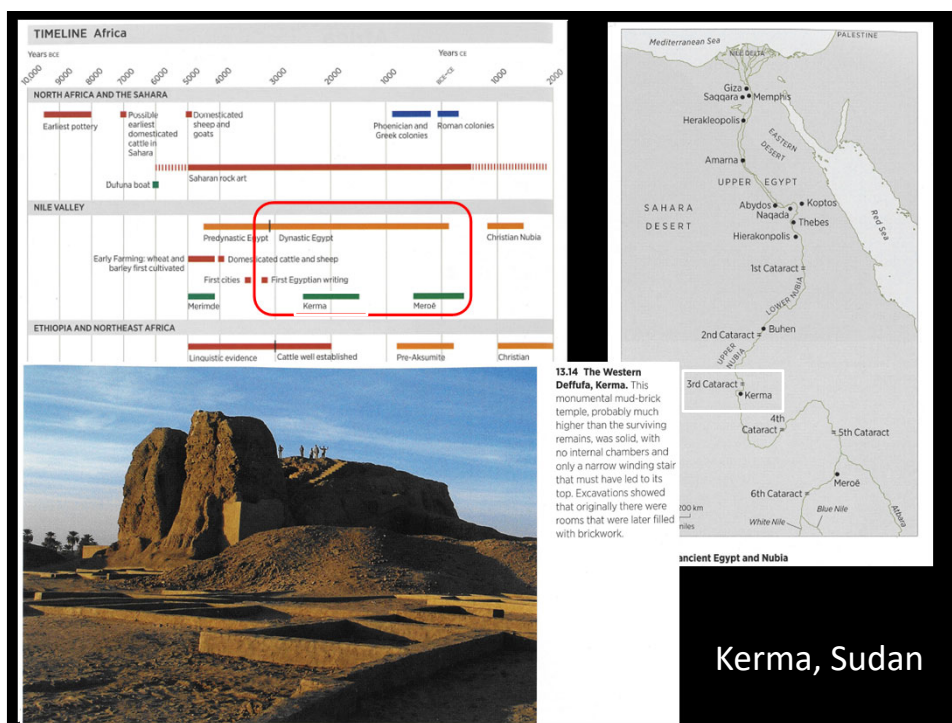
12



13



14



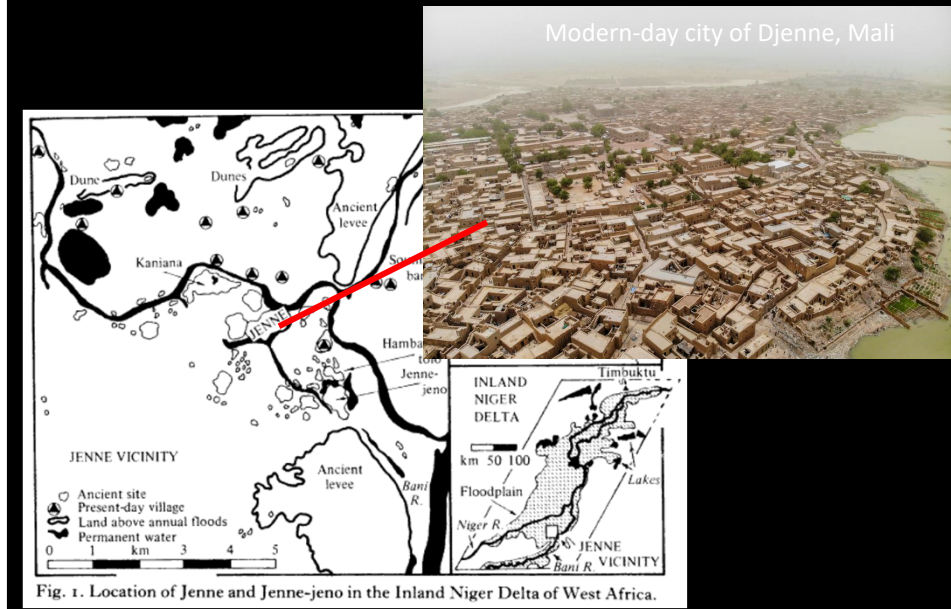
15



16

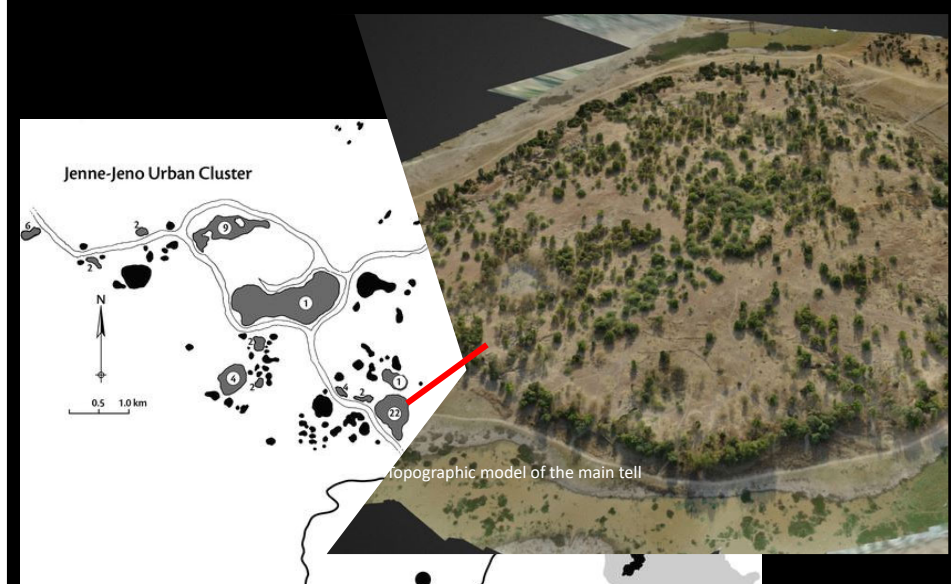


## Urbanism without the State?



17

## The Jenné-Jenno tell



18

## Jenne-Jeno Urban Complex

ancient city/urban cluster in  
Middle Niger River Delta

Jenne-Jeno tell rises 7+ meters, some  
areas in cluster have 9 m of  
archaeological deposits

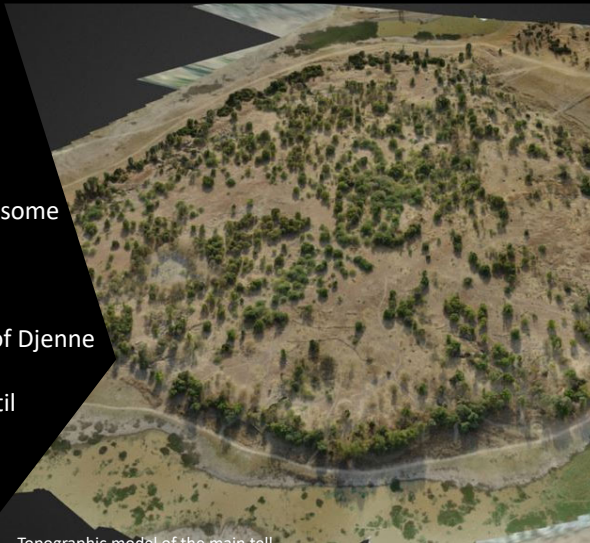
70 tells in 4 km of modern city of Djenne

Jenne-Jeno started ~250 BC, until  
AD 1400

Many of the tells/clusters  
seem to grow and shrink  
alongside Jenne-Jeno

Topographic model of the main tell

Within 55,000 km<sup>2</sup> there are hundreds of tells/mounds



19

## The Mesopotamian Urban Model

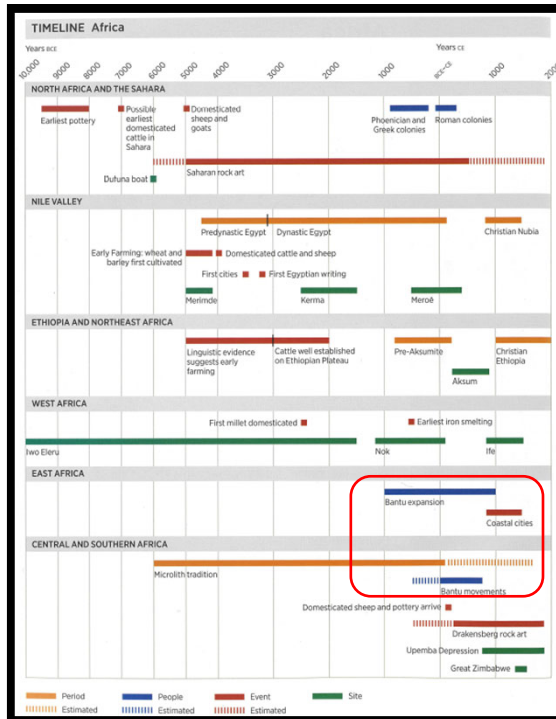


## Jenne-Jeno Urban Complex “city without citadels, temples, palaces...”

Despite decades of excavations and survey now, no evidence of palaces,  
elite districts, elite tombs or burials, public buildings like temples

But substantial evidence of long-distance trade and craftwork,  
multiple areas of numerous “identity groups” and diverse burial practices,  
many corporate groups (a group, often through kinship, that hold property)

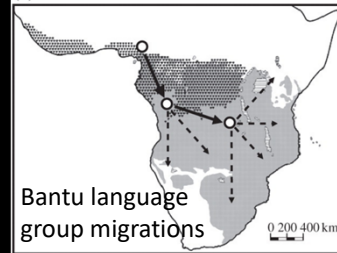
20



## The Spread of Farming Life

### Bantu migration:

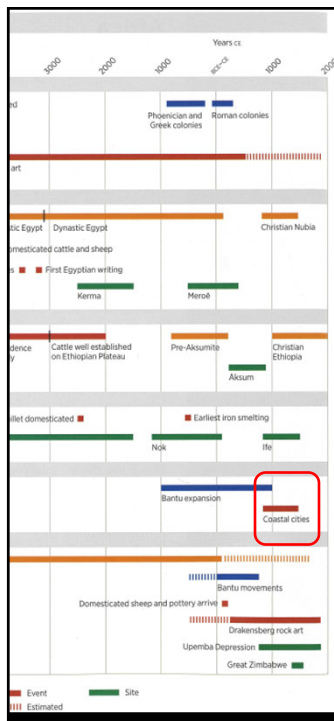
People, Culture, Language, Animals, Plants  
(eventually with iron-working technologies)



starting out of west-central Africa (Cameroon) at least by 1000 BC

about 5% of all people alive today speak a Bantu language

21



## East Africa – Swahili Coast



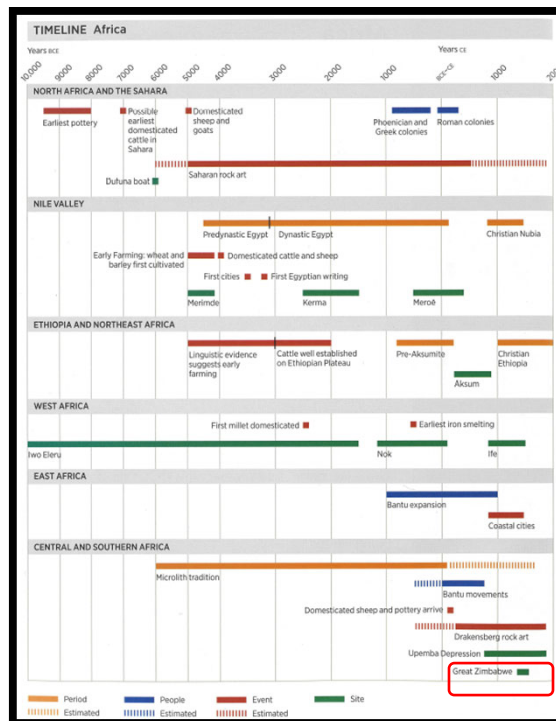
22

## East Africa – Swahili Coast

- Time Period
  - AD 500 – Initial spread of a distinct iron-using culture along the East African coast, known as the Tana Tradition
  - AD 1000 – Settlement of first cities
  - AD 1100-1300 CE – Golden Age of Swahili cities
  - 1331 CE – Ibn Battuta visits Swahili coast
  - 1415 CE – Zheng He visits Swahili coast
  - 1498 CE – Portuguese sailors visit Swahili coast
  - 1800 CE – Omani Sultanate colonizes the area



23



## Great Zimbabwe

24





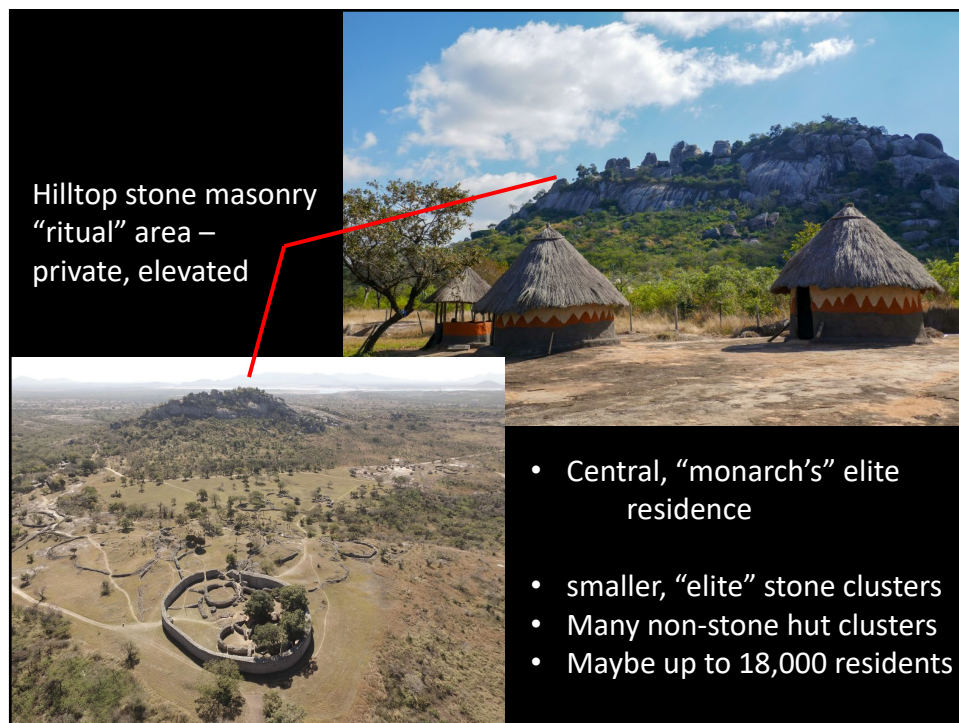
25



26



27



28