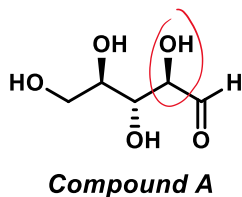
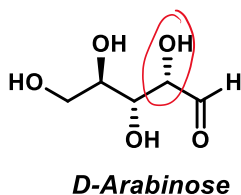


Quiz 8

1. In each box, circle **ALL** characteristics that apply to Compounds A and B based off of D-Arabinose, given below. (4 pts)



Compound A is:

an epimer of D-Arabinose

an anomer of D-Arabinose

an L sugar other than L-Arabinose

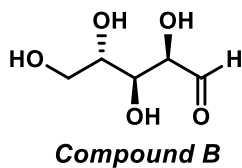
the enantiomer of D-Arabinose

a diastereomer of D-Arabinose

L-Arabinose

@ C2

all changed



Compound B is:

an epimer of D-Arabinose

an anomer of D-Arabinose

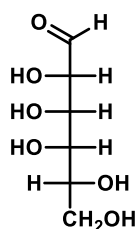
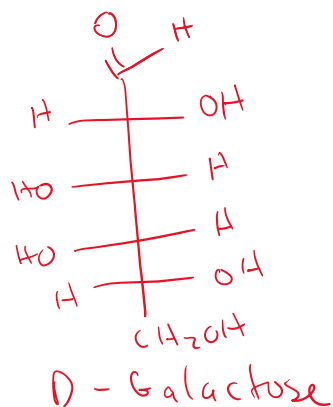
an L sugar other than L-Arabinose

the enantiomer of D-Arabinose

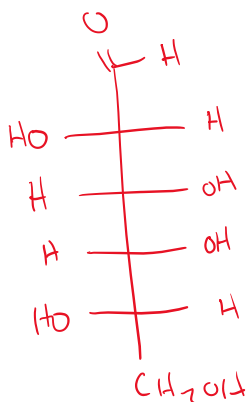
a diastereomer of D-Arabinose

L-Arabinose

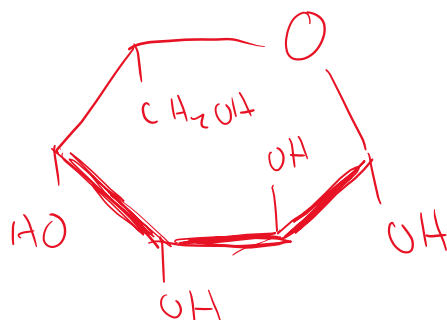
2. D-Talose is drawn below. Given that Galactose is a C-2 epimer of Talose, draw L-Galactose in the first box. Then, draw a Haworth projection and a chair structure of β -L-Galactopyranose in the boxes indicated. (6 pts)



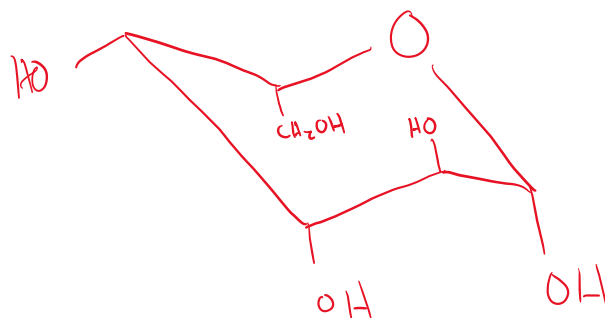
D-Talose



L-Galactose



**β - L - Galactopyranose
Haworth Projection**



**β - L - Galactopyranose
Chair Structure**